

Case Study: K College, Tonbridge

011/Feb14



Photo: Tim Barker

A full range solution from Kawneer for a college redevelopment scheme

The entire range of architectural aluminium systems from Kawneer were used on the redevelopment of K College, Tonbridge for their “high quality” and flexibility. Aluminium’s sustainability credentials, low maintenance and long life cycles also played a part in the college being BREEAM accredited.

Building: K College

Location: Tonbridge

Architect: Dyer

Main Contractor: Galliford Try

Installer: APiC UK

WWW.KAWNEER.CO.UK

 **KAWNEER**
AN ARCONIC COMPANY

Kawneer systems help college into the 21st Century

Kawneer's windows and doors and curtain walling, used vertically and as rooflights, feature on the £60 million new-build and refurbishment of the former West Kent College in Tonbridge, one of the largest projects of its kind in the further education sector. Kawneer's AA®100 curtain walling with 50mm sightlines and AA®110 curtain walling with 65mm sightlines and inclined mullion-drained profiles for double-glazed rooflights were complemented by AA®601 top-hung casement windows and series 190 heavy-duty commercial entrance doors and AA®605 low/medium-duty swing doors.

Installed by specialist sub-contractor APIC UK for design and build main contractor Galliford Try, construction of the 20,037m² flagship new-build concrete-framed main college and timber-framed media centre over 5.6 hectares was completed over three years. This was in two stages to allow earlier occupation of the first phase so previously occupied buildings could be demolished to allow the second phase to commence. Project architects Dyer's brief was to reorganise and re-plan a college that integrated a number of existing ancillary buildings as well as a new, purpose-built building to create a more unified and collective learning experience. At a more basic level, the college needed to replace many of the old and inefficient building stock with fit for purpose educational facilities to help take the college into the 21st Century.

The Kawneer systems were used because Dyer "understood" the product and Kawneer's window system particularly was appropriate for their "punch hole" design. Dyer architect Nick Russon said: "The punch windows were carefully sized to a size that could be repeated around the building to suit various room sizes. They were also configured with a transom at high level to form a fanlight that could receive either glass units or louvre units to receive services connections. The Kawneer systems contribute to a high quality palette of materials to the external envelope. They include standard interface components which allowed the windows to be built into a variety of cladding systems. The natural anodised finish of the product was chosen to contribute to a neutral palette of envelope colours. Ribbons of bright cladding panels were then introduced between the windows to provide accent colours. K College was a BREEAM accredited building and with aluminium's sustainability credentials, low maintenance and long life cycles it was the logical choice for the windows, curtain wall and roof lights."

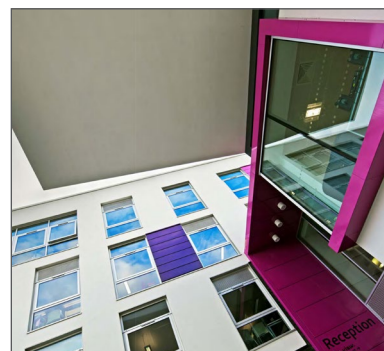
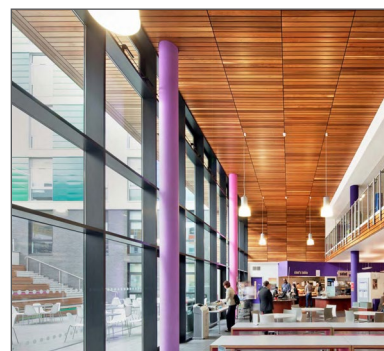
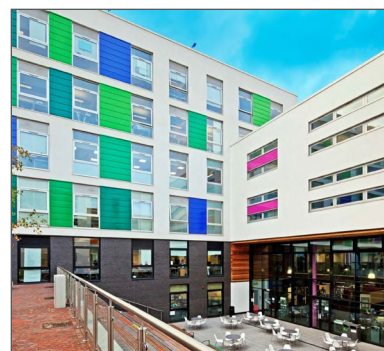
The 23,160m² Campus 21 masterplan provides an additional 3,160m² and comprises the main college building accessed from a public square with "shop fronts" for hair and beauty salons and access to the new media and arts centre. A training restaurant is located on the third floor, providing prominent views across the Medway Valley. The new community hub channels users into the body of the main building, the focus of which is a central courtyard with a series of learning terraces which follow the slope of the site and provide spaces for group and sole study, social and breakout time, open teaching and outside performances.

An additional 3,123m² of accommodation, including an existing art block, was also refurbished following substantial funding from the Learning Skills Council which recognised the college's status as a Centre of Vocational Excellence in Health and Social Care as well as a satellite site for the Universities of Kent, Greenwich and Canterbury Christ Church.

Please contact our Architectural Services Team if you have a project you would like to discuss: Tel: 01928 502604 / Email: kawneerAST@arconic.com

Kawneer UK Limited, Astmoor Road, Astmoor Industrial Estate, Runcorn, Cheshire WA7 1QQ
Tel: + 44 (0)1928 502500 Fax: + 44 (0)1928 502501

WWW.KAWNEER.CO.UK



Photos this page: Galliford Try